



Annual Report

2018-2019



Anta Akhi

Table of contents

EDITORIAL	3
OUR MISSION	5
TRIBUTE	6
SITUATION OF OUR YOUNG ADULTS WITH DISABILITIES.....	7
ACTION WITH OUR YOUNG ADULTS WITH DISABILITIES	8
NEWS FROM OUR FAMILY	9
TRAINING	10
The training of children and young people with disabilities.....	10
The training of Anta Akhi’s team.	10
The training of schoolchildren.	10
The training of University students.....	11
Generally, who are our visitors of the year?.....	11
OUR FINANCIAL AND HUMAN RESOURCES NECESSARY FOR THE REALIZATION OF OUR ACTION	12
OUR PARTNERS	13
OUR TEAM.....	14

EDITORIAL



ROULA NAJM
PRESIDENT DIRECTOR GENERAL

Today, I am going to tell you about a suffering country... that is meant to live eternally!

Lebanon!

It is a place where people from all over the world succumb to its charm, fall in love with its beauty, amazed by the generosity, liveliness of its people and their joy of living. Everything is beautiful, the mountain, the sea... Everything is splendid!

It is an exceptional country, but full of contradictions. A very small country that has struggled for years against so many wars, result of so many international interest on its territory. A country that has fought for more than 30 years against threats that affect its fragile internal balance, while trying to maintain it despite everything.

Today, this beautiful country that remains exceptional is again and since October 17th, deeply shaken.

The people protest, shout, face the political class, and ask for justice, equality...

The people are tired of the inability of politicians to provide solutions to the daily problems of life.

This country, naturally beautiful, lives today a terrible situation, a widespread corruption, where the minimum of a life worthy of any human being is not assured: the unemployment rate is galloping and the number of people living below the poverty line is reaching record highs. Infrastructures, electricity, water and public

services are failing: it is the result of a widespread corruption.

Like everything in Lebanon, the contradiction reigns everywhere. This is dangerous but is somewhere great: on the same place, with one voice, we see, we hear the richest and the poorest claiming their rights for a dignified life. All are there; the social and confessional cleavages have been exceeded!



An incredible country, an incredible people! Yes, because it has faith despite all the difficulties. It is beautiful, but it is also scary: many people, companies and associations like Anta Akhi are affected. The country is blocked, projects are slow, the economy is deteriorating...

...

What is our situation at Anta Akhi?

The revolution has had a major impact on our finances. We have been forced to cancel self-financing activities and the collection of donations is almost impossible: the end of the month reveals to be very difficult!

But with all this, our faith, our trust in God and in Mary Set el Beit (Mother of our home), Queen of the impossible, have not been shaken.

Yes, the roads closures affected us: we had to ensure, every day, a constant presence with our young adults with disabilities, these being entirely dependent on the support of the life companions. It was also necessary to ensure that all their vital and medical needs were met. A challenge like no other, with a great faith... like no other!

In all this uncertainty and disorder that surround us, Anta Akhi remains a place of prayer, a place of praise and wonder, a bit like the Cenacle of Jerusalem.

The truth is that, we can't win a victory in our combat if we do not remain firmly attached to Jesus Alive and his Mother Mary. Everything we do in our daily life, we do it by directing our eyes to the savior and his mother, Set el Beit, to draw from them and with the strength of the Holy Spirit, the courage we need to continue. With them, we do not care about tomorrow, because only God knows what tomorrow may bring. Why worry about it then?

We do, of course, our part and we put all our trust in Jesus Alive, present, incarnated in people of good will, our faithful friends, who are always present to sustain Anta Akhi.

We would like to thank each and every one of you, dear friends: the Ladies of the Support Committee, the members of Anta Akhi France, our friends from the

Franciscan Fraternity of Eastern France, our volunteer friends from the United States, Australia, and of course, from Lebanon... You are a gift from Mary for our young adults with disabilities.



Lord, we thank you for your goodness, your tenderness and your mercy. We put ourselves in front of you today, praying for all those people who love, believe and are present for our young people with disabilities at Anta Akhi.

Lord Jesus, we pray for our dear country, Lebanon, and above all, we ask you to always support the faith of the Lebanese people.

Thank you Mary, Queen of the Impossible, for being always there for each and every one of us. Thank you for your tender gaze and your great love. It is through this Great Love, the Child Jesus, your beloved son, that we will always be victorious. Amen.

For your donations in Lebanon or elsewhere

Online payment : www.antaakhi.org

BANK AUDI SAL

Code swift : AUDBLBBX

Account number \$: 165208 -0030

IBAN : LB86 0056 0000 0000 0016 5208 0030

Account number €: 165208 -0035

IBAN : LB48 0056 0000 0000 0016 5208 0035

For your donations in France

Bank details (without tax receipt):

BANK AUDI SARADAR FRANCE – Bank code : 18089

BIC: AUDIFRPPXXX

Account number in euros : 115 17897 451 1 -

IBAN: FR76 1808 9000 0111 5178 9745 121

For a tax receipt : www.helloasso.com/associations/anta-akhi-france or www.antaakhi.fr



OUR MISSION

A path of loyalty, to live the family, and create a Community of Life!

For young people with disabilities:

Manage the requirements of their daily lives, for a life of dignity.

Accompany them throughout their lives, and by our presence, make them realize their importance;

Help them develop the sense of responsibility and discover the meaning of life. Through training, help them find the peace of heart, inner freedom vis-à-vis the disability issues, help them live in joy in community, and prepare with serenity their departure from this world.

WITH FAMILIES:

Accompany the family to avoid the exhaustion of its members.

Prepare with the family the requirements linked to the future of the adult, after the death of his parents.

With the society:

Rehabilitate the able-bodied in their relation to the world of disability: Inform, raise awareness and mobilize to achieve a change in the values.

Create a network of friends and colleagues to accompany with us the course of their life..

Building a Family

Building a large family, a community of life, out of youngsters living with disability and healthy people: couples, singles, and lay people whose vocation is this « living together, different and complementary in peace, joy, through love, as brothers »

Living the requirements of love, where the weakest is at the heart of the family, helping him live his vocation as a man and as son of God.

Anta Akhi is a school of life, a school for training and transformation to construct one another: live his reality as a human being.

TRIBUTE

**Madonna Soueid, Rita Monzer and Hady Rizkallah
preceded us to the Father**



Madonna
22nd Feb 2019



Rita
15th Oct 2019



Hady
31st May 2019

We give thanks to all those who have gone before us to our heavenly Father this year; for all the love and joy we lived by their presence.

Mr. Hady Rizkallah was a member of the General Assembly and a great friend to Anta Akhi. He has been a pillar in the life of our Home. We will not forget everything he has done with enthusiasm, to bear with us Anta Akhi's family: it was an efficient and loving presence, and he represented a sweet and tender dad for his children, in his small and big family.

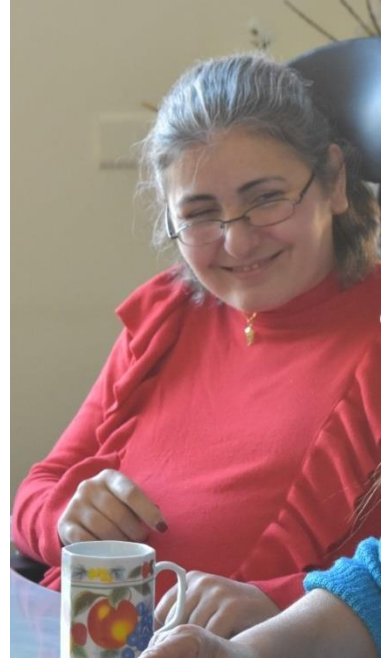
Madonna, who lived permanently in the Home of Tenderness, left in our hearts a legacy of joy and tenderness. Playful and always in action, she left a big void behind her. But we know it, we are sure, that she watches over us from above by offering our joys and sorrows to the Living and Victorious Jesus.

Rita spent weekends at Anta Akhi with her friends. She sowed joy with her smile, her purity and her energy.

Our experience together, at the Home of Tenderness and beyond, is a testimony of joy despite all difficulties.
Finding and giving meaning to their life allowed Hady, Madonna and Rita
to radiate a great love for God and for all those who knew them.

SITUATION

OF OUR YOUNG ADULTS WITH DISABILITIES



Our young people? Our adults? Our elders?

We can no longer qualify of young, the 11 "young people" who have exceeded 50 years of age, and who are welcomed into our Home of Tenderness. They remain young if in their hearts, the body affected by illness and regression betrays a difficult and heavy experience on a daily basis.

Anta Akhi is not an asylum structure. Addressing daily living and health needs may be a goal for some. But what makes the reason of Anta Akhi, is this living together, different and complementary, this testimony of joy which certifies that life is worth living as a celebration.

But at what cost?

Our Young people and their state of health in figures

77	Young adults supported by Anta Akhi: 22 permanently, 20 during the day, 27 for weekends, 5 at home, 3 for fulfillment.
184	Children and young people with disabilities who follow existential and spiritual training
16	Hospitalizations for 7 young people during this year.
162	Medical consultations
1797	Respiratory therapies
45	Paramedical exams: the most common being ultrasounds, and blood tests.
41	Articular, positioning, functional, respiratory and orthopedic assessments

The regression is heavy to bear for young people, and heavy to bear for those accompanying them. If the purpose was just to meet their daily needs, 2 or 3 people would have been enough. But today, a permanent staff of 19 life companions per day, 10 in the morning and 10 in the evening (with the person in charge), are necessary to continue to inject energy with young people and preserve the mission of Anta Akhi.

Pierre, Fadi B., Marcelle and Barbara are the ones who suffered the most serious regressions. Barbara can barely move her lips to speak: no sound comes out, but her smile never leaves her face. If Marcelle speaks relatively better than her sister, she has experienced a significant decline on other levels, including the psychic one. As for Pierre, he underwent 5 hospitalizations in 9 months, and Fadi B. is now in a wheelchair following a stroke.... Despite all this, our young adult remain witnesses of joy: if they can't express themselves through speech, they can do so, through their daily experience of life, their acceptance of disability, and their smile...

We are asked why not send our young people to their homes. Our answer is clear: it is the parents who need support in these times. For example, Pierre's dad died this year and his mom has health issues. Despite the fact that some of our young people can no longer sleep in the parental home, Anta Akhi insists that the link still exists: a life companion is sent during the day with a young person to periodically visit his parents at home. In this regard, it is out of the question to "close this Home of Tenderness". Despite all the financial difficulties, and with the grace of God, we will continue to be present for our young people until their great departure.

ACTION

WITH OUR YOUNG ADULTS WITH DISABILITIES

To maintain skills, or develop them, a number of activities, which include training, welcoming visitors, witnessing, learning French, manual work, sports, relaxation, are conducted among others:

- **Before 10am:** our young people who live permanently at Anta Akhi are busy with the daily life needs. The young people coming for the day are divided into 2 groups to occupy each one according to their potential and interests.
- **After 10am:** all young people are divided into 6 groups (depending on the type of disability) and do 2 activities per day, except young people with significant regressions and heavy medical requirements who do one activity per day.

But we are also present in the heart of society and this year we made 40 recreational and socialization outings, in small and large groups: at the cinema, picnics, restaurants, visiting friends, festivals, concerts, the beach...

One of the highlights of the year was the summer camp which took place this year at the Saint Georges Convent in Qlailat for 5 weeks. The strong point of our camp was welcoming 2 groups for relatively long stays: a group of 15 young people from the Arab world, for 5 days coming for the Regional Youth Days and the Saint Paul group, formed of 25 people, who lived with our young people for 8 days.



NEWS

FROM OUR FAMILY

Anta Akhi's anniversary: this September 8, 2019, we renewed the consecration of all Anta Akhi to Mary, Set el Beit *mother of our home*. As a result of this consecration, our family meets once a month to spend a day of prayer, teaching, and sharing together: these are our **Set El Beit days**.

A weekly day of prayer, which takes place every Friday, brings our young people together with the team members who want to pray together for all those in need, for Anta Akhi and for Lebanon.

Annual outings of the units are carried out so that the members get closer and so that the fatigue of everyday life does not take precedence over the family atmosphere.

Days prepared by the young people for the team are organized, on one hand to animate the days, and on the other hand, so that the young people have the pleasure of preparing activities, and not always benefiting from them.

The parents of our young people remain at the heart of our action. Anta Akhi is there to support some with family guidance, through ad hoc help, through welcoming them during the day or for long winter stays. Likewise, the parents support us, especially in some self-financing activities.

The training of the team continues on several levels: personal, existential training, management, living together, or related to the health of our young people ... they are trainers from Anta Akhi and outside (including Ms. Nadine Zeinoun) who offer their time and knowledge for free to support us.

The therapy of young people by means always more adapted, in the Home of Tenderness and outside, is in progress: equitherapy, aquatherapy, and the Snoezelen method take place regularly for some of our young people.



TRAINING

Anta Akhi is a training institution targeting all the people who enter the Home of Tenderness. It is present for individuals, groups or organizations, who would like to know more about the world of disability, go beyond the gaze of society, attracted by an art of living together in joy despite all the difficulties.

In order for it to bear fruit, the training touches first, our young people with disabilities and members of Anta Akhi's team, who will together guarantee awareness, be witnesses and transmit a way of life.

The training of children and young people with disabilities

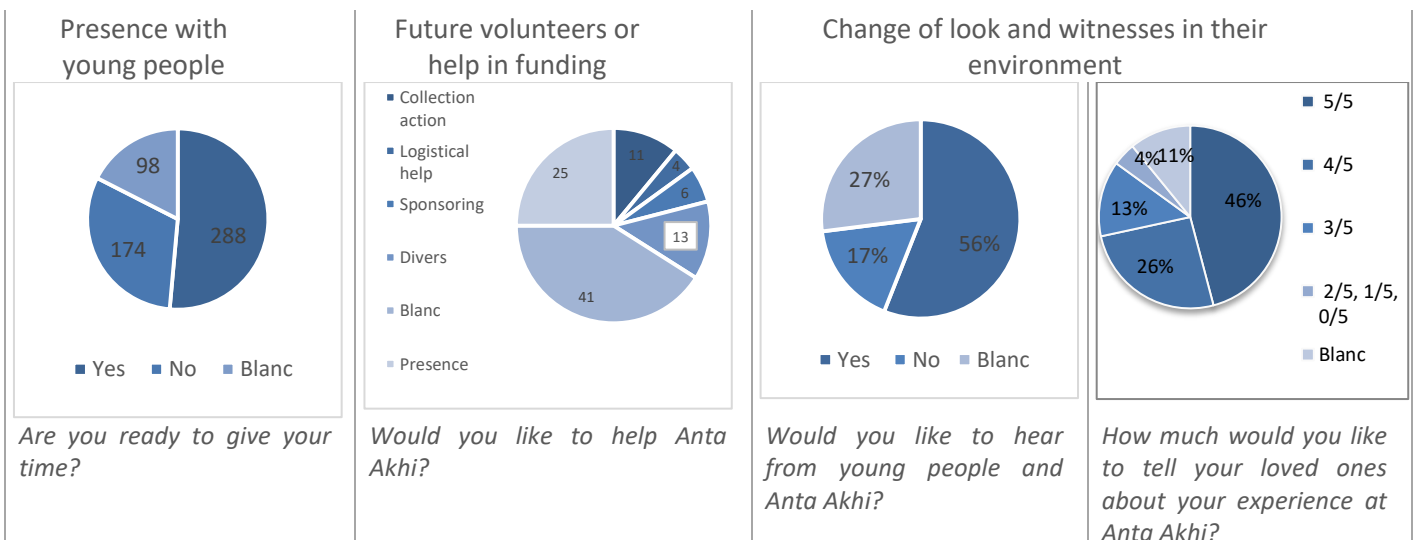
	Anta Akhi	Sesobel	This training is carried out periodically by a team of Anta Akhi. These children and young people learn the logic of the values of Jesus which help them to overcome the difficulties of their journey.
Existential training	18	24	
Spiritual training	31	184	

The training of Anta Akhi's team.

This year, a core of trainers has been set up at Anta Akhi: a team of 9 people meet monthly to deepen existential training based on the training modules developed by Elisabeth Chaumont. The latter follows these meetings closely, through short stays, at Anta Akhi and by Skype.

The training of schoolchildren.

This year, we welcomed 19 schools with 1,216 schoolchildren at the Home of Tenderness. And we visited 6 schools to raise awareness and give testimony (by our young people with disabilities). With a database of 560 students, we perceive a desire to be a:



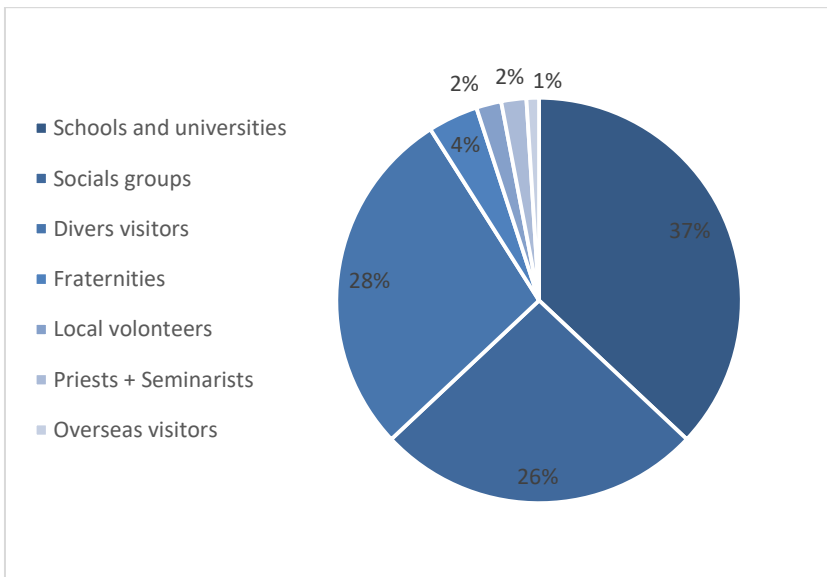
The training of University students

This year we had the presence of **61 academics** for internship, social service and project info, coming from 6 universities. In addition, we are continuing our collaboration with the Holy Spirit University of Kaslik for the course "Citizen and civic engagement" given in 30 sessions (including 3 at Anta Akhi) to nearly 300 academics per year.

Awareness and training with ecclesial society

23 seminarians from Ghazir seminar	For a 3-day punctual formation, for awareness-raising visits and for pastoral action with our young people with disabilities. Likewise, Ms. Roula Najm went to the seminary to give training to the seminarians before they came to Anta Akhi.
33 priests	To celebrate Mass, coming individually, with groups or schools.
Bishops and superiors of seminaries	During the Assembly of Patriarchs and Bishops, Ms Najm presented the action and the mission of Anta Akhi.

Generally, who are our visitors of the year?



The Panato family, whose mother has been Ghassan's sponsor for more than 10 years



Bishop Joseph Spiteri
Apostolic Nuncio



Schoolchildren



Various groups visiting including
Scouts of Lebanon

OUR FINANCIAL AND HUMAN RESOURCES

NECESSARY FOR THE REALIZATION OF OUR ACTION

They are present around our young people: support committees, friends, sponsors, volunteers, donors: they believe in our mission and give their time and their income to ensure our young people a life of dignity in joy.

Thank you to all our friends from Lebanon and elsewhere. Thanks to you, we take up a daily challenge, which increases with time, but which we are sure to take up thanks to the love that you radiate around you, thanks to the "Yes" that you renew from year to year. In this context, it is important to note our consultants, in particular Mess. Farah and Bitar, always present, especially during times of crisis to support us in the management of the association.

From Lebanon

- 3 Activities of the Ladies' Committee : Annual dinner, annual lunch, cinema action
- 2 Activities of the Committee of the 25 : cinema action, countryside lunch

Self-financing activities and donations unit :

- 157 Collection in 40 locations of donation boxes
- 41 Parish actions
- 19 Supermarkets actions
- 8 *Sobhiés breakfasts* at the Home of Tenderness
- 1 Family dinner
- 3 New sales products
- 6 Tons of recycled clothes sold to Fabric Aid
- 3 New self-financing activities : cinema, sports day, exhibitions
- 2334 Sponsors

Outside Lebanon

- 3 Self-financing activities from Anta Akhi France : annual dinner, race, concert

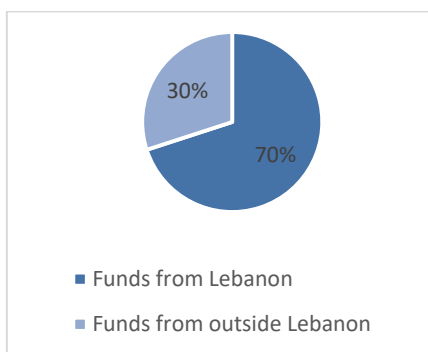


OUR PARTNERS

Faithful and new partners

Our partners, who are mainly located in France, Switzerland, Belgium or Germany, are invaluable for our action, whether financial or human. Thanks to them, we welcome volunteers, trainees, alongside funds necessary for the advancement of projects. Who are these partners?

	Loyal partners	New partners
For short or long terms volunteering.	Délégation Catholique de coopération IFF Europe IRCOM Franciscan Fraternity from the East of France	Œuvre d’Orient Fidesco Apprentis d’Auteuil – Training center Institute Alliance Plantatio – training for professors in the catholic teaching.
For project funding or operation by Anta Akhi	Franciscan Fraternity from the East of France Œuvre d’Orient Michelham FBML Allemagne	Swiss Philanthropy Provictimis



Donations, self-financing activities and projects, constitute 98% of our income. The remaining 2% is divided equally between the Lebanese Government - Ministry of Social Affairs, and the parents.

Today our contract with the Ministry provides funding for 5 young people for day care. We are working to extend this contract in terms of the number of our young people and the types of reception, trying to include the permanent reception.

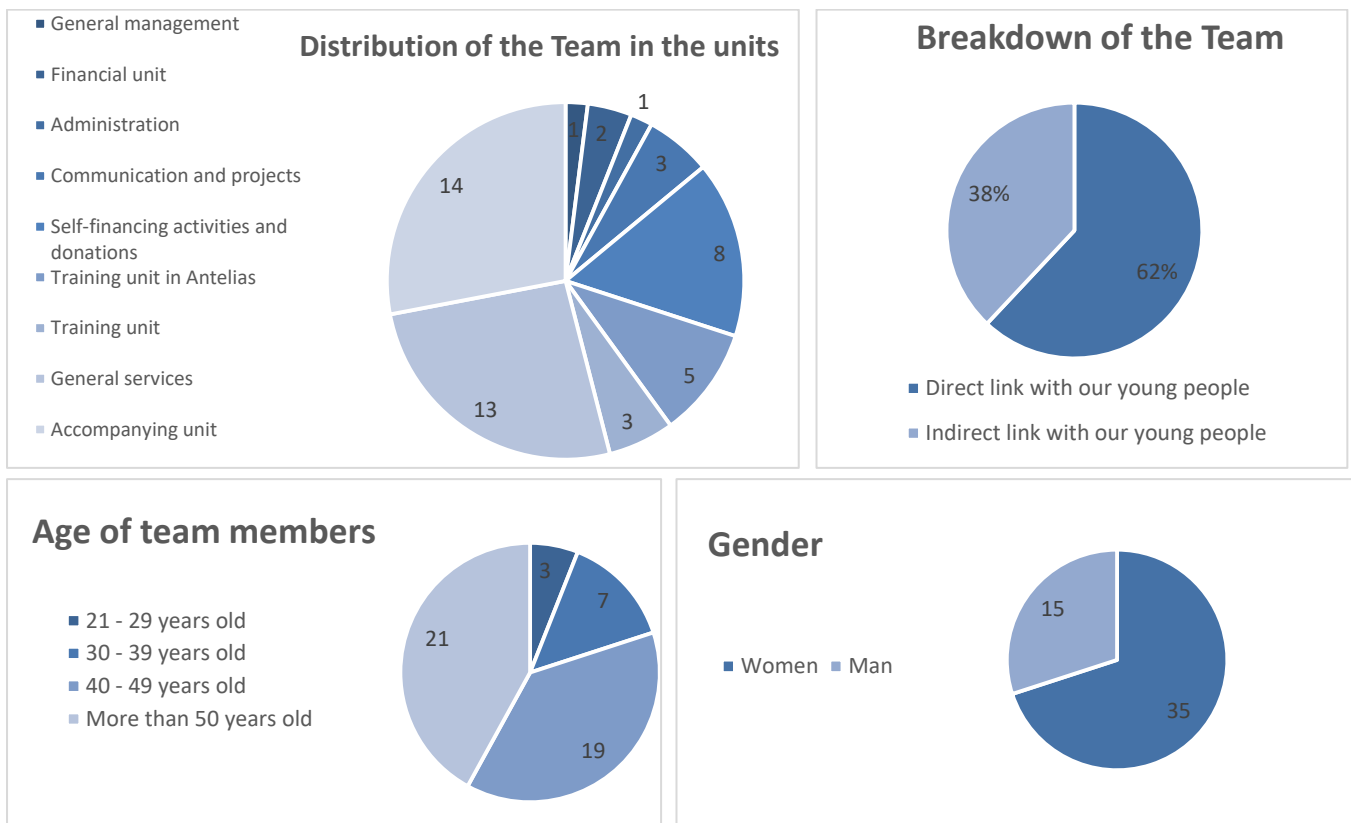
In addition, in-kind donations constitute considerable income for our Home of Tenderness, each year it is a question of covering all the needs for food, clothing, and hygiene for young people and the Foyer, alongside other needs. Such: supplies, equipment, needs for self-financing activities, etc. These needs constitute 17% of our annual income.

In order to run Ant Akhi without emergencies, we plan our needs 3 months in advance. To store all these needs, we have laid out our storage, created and proposed a new working procedure with the different units by setting monthly needs to help the in-kind donation unit to define and provide us with the annual needs.



OUR TEAM

To implement all this action, and to achieve our mission, a team of 50 people working on full-time basis is present with our young people. In addition, a mobile team works throughout the week (with a need for 9 shifts of life companions per day), is available to meet various needs, in particular life companions. Our action is possible thanks to a committed team available 24/7: everyone brings their building stone to the construction, some volunteer with their time, others make monthly sponsorships... and all form a beautiful family around our young people with disabilities.



To conclude,

Hold on to it firmly:

Nothing and no one can shake, suffocate, and tear away the joy that is the foundation of your life: this joy makes everyone, like the Living Jesus, a child of His Father, of His Mother, by the force of His Holy Spirit, here and now, and in the life that goes on.

So every day is a day of celebration. Every day is Christmas, Jesus Living in me, if I am present in His presence!
Through me, the joy of Christmas is sown in each of those we meet. That will be the joy of Mother Mary, the joy of the Living Jesus Her Son, the joy of the Father, spread in each one from the source of the Holy Spirit.



**May everyone remember to consider what kind of love we are loved, each one of us, continuously, by the Living Jesus, by His Father, by His Mother Mary, by the strength of His Holy Spirit!
What can be more important than that to disturb me, to reduce me, to shake my joy, which is to be like the Living Jesus, here and now, and in the life that goes on?**

Yvonne Chami
Founder

We believe that all life is worth to be lived as a **celebration** because **love is greater than everything** and because **you are my brother.**

Anta Akhi Creed